

ADAS<sup>®</sup>

# ETFE Skylight





- Design and build Archi-Engineering firm.
- Over 30 years experience with more than 650 projects.
- Lightweight long span structure specialist.
- Low risk with tested & proven design details.
- High level of Prefabrication:
  - Fast Erection on Site
  - Precise Fabrication
  - Good Quality Control
- Low Maintenance with non-stick roof surface.



## FEATURES OF ETFE

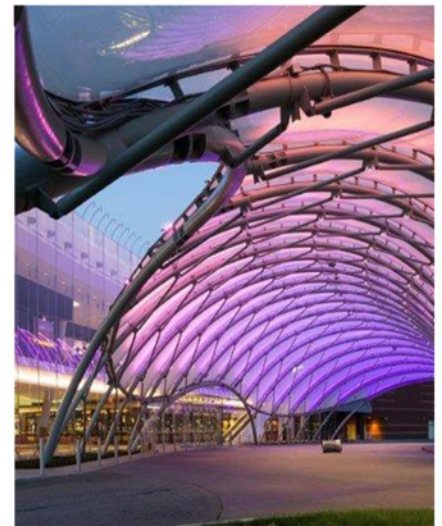
---



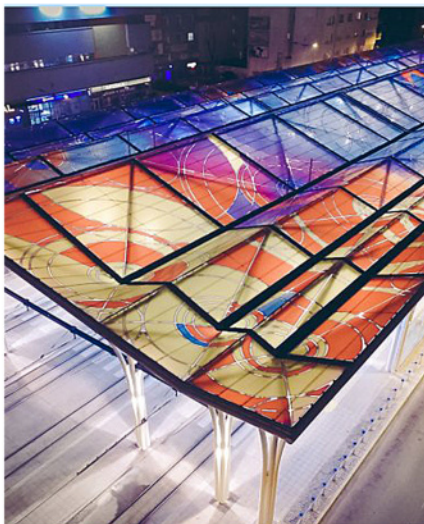
Extremely Lightweight



Excellent Light Transmission



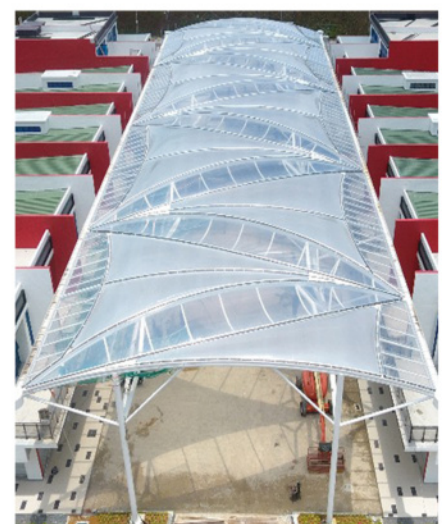
Free-Form Expression



Colour or with Prints



Fritted Patterns



Matte or Transparent

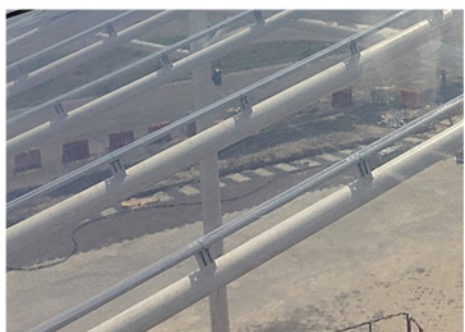
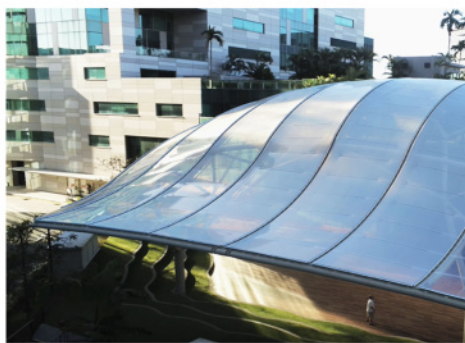
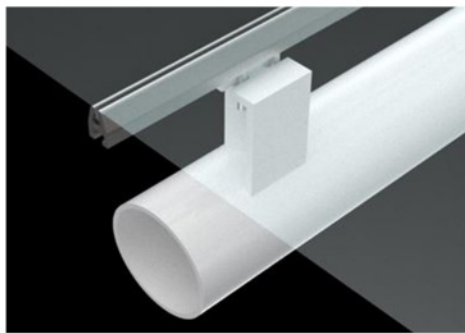




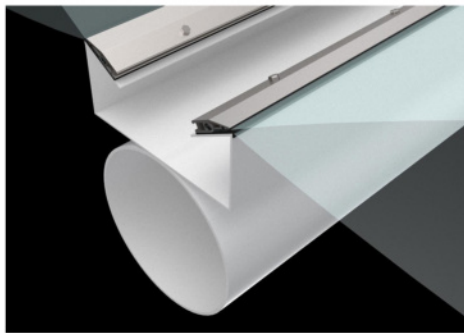
## TYPES OF ETFE SYSTEMS

---

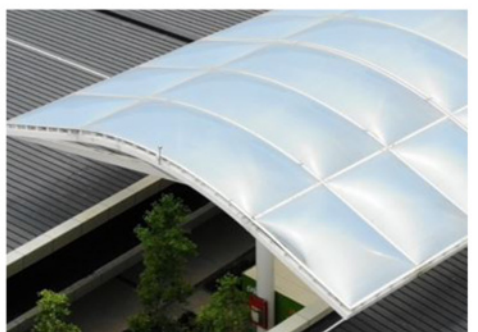
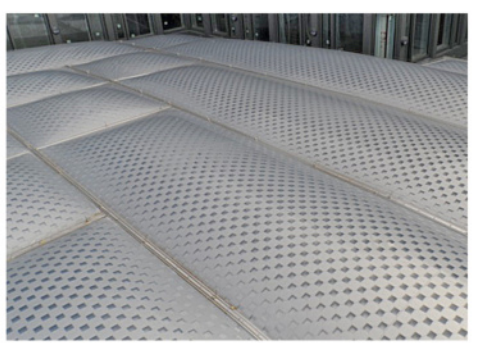
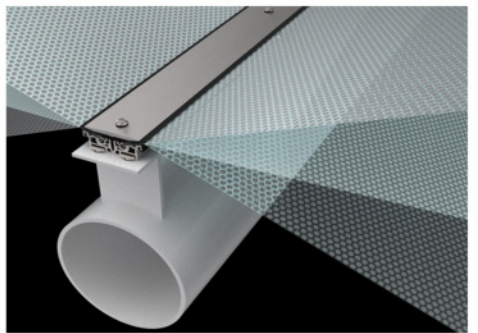
### 1. Single Layer System



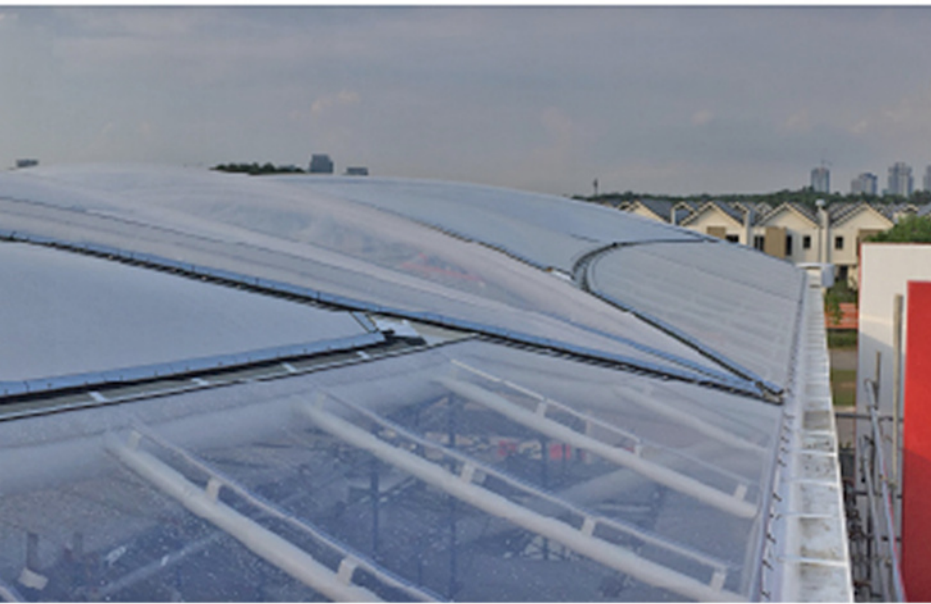
### 2. Double Layer System (Cushion)



### 3. Triple Layer System (Cushion)







## M3 Main Boulevard

### CLIENT

Sunway Iskandar

### ARCHITECT

Alam Architects & Planner Sdn. Bhd.

### AREA

2,800 m<sup>2</sup>

### MATERIAL INSTALLED

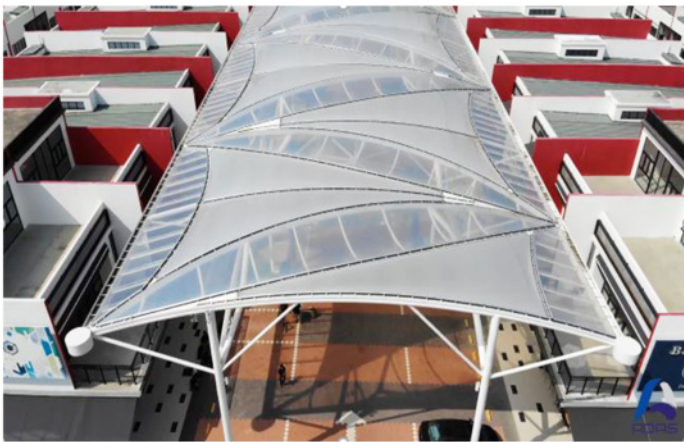
ETFE Single Layer & Double Layer

### LOCATION

Johor Bahru, Malaysia

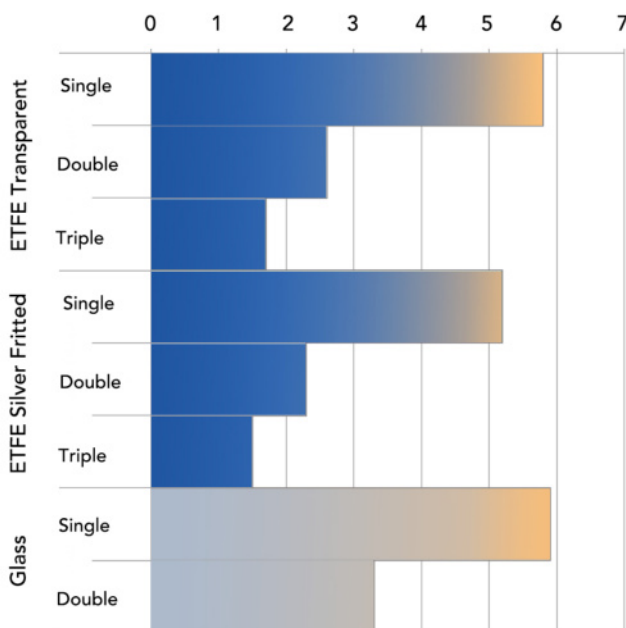
### CONSTRUCTION YEAR

2018



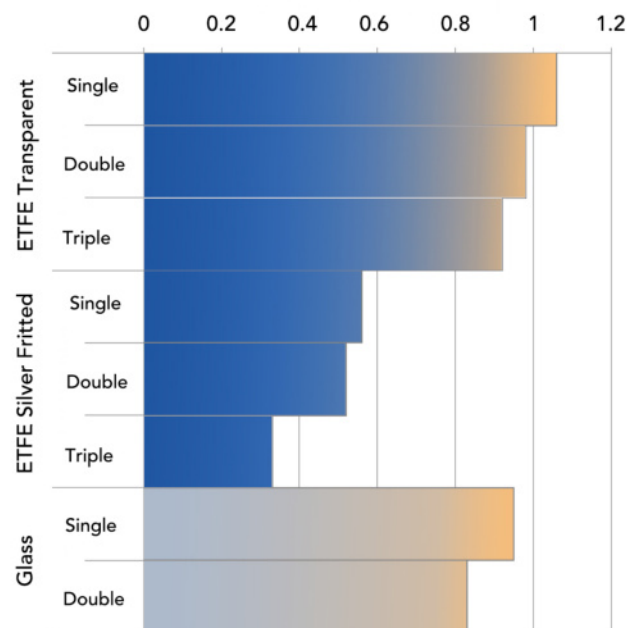
## THERMAL PROPERTIES: ETFE vs GLASS

Typical U-Values (W/m<sup>2</sup>K)



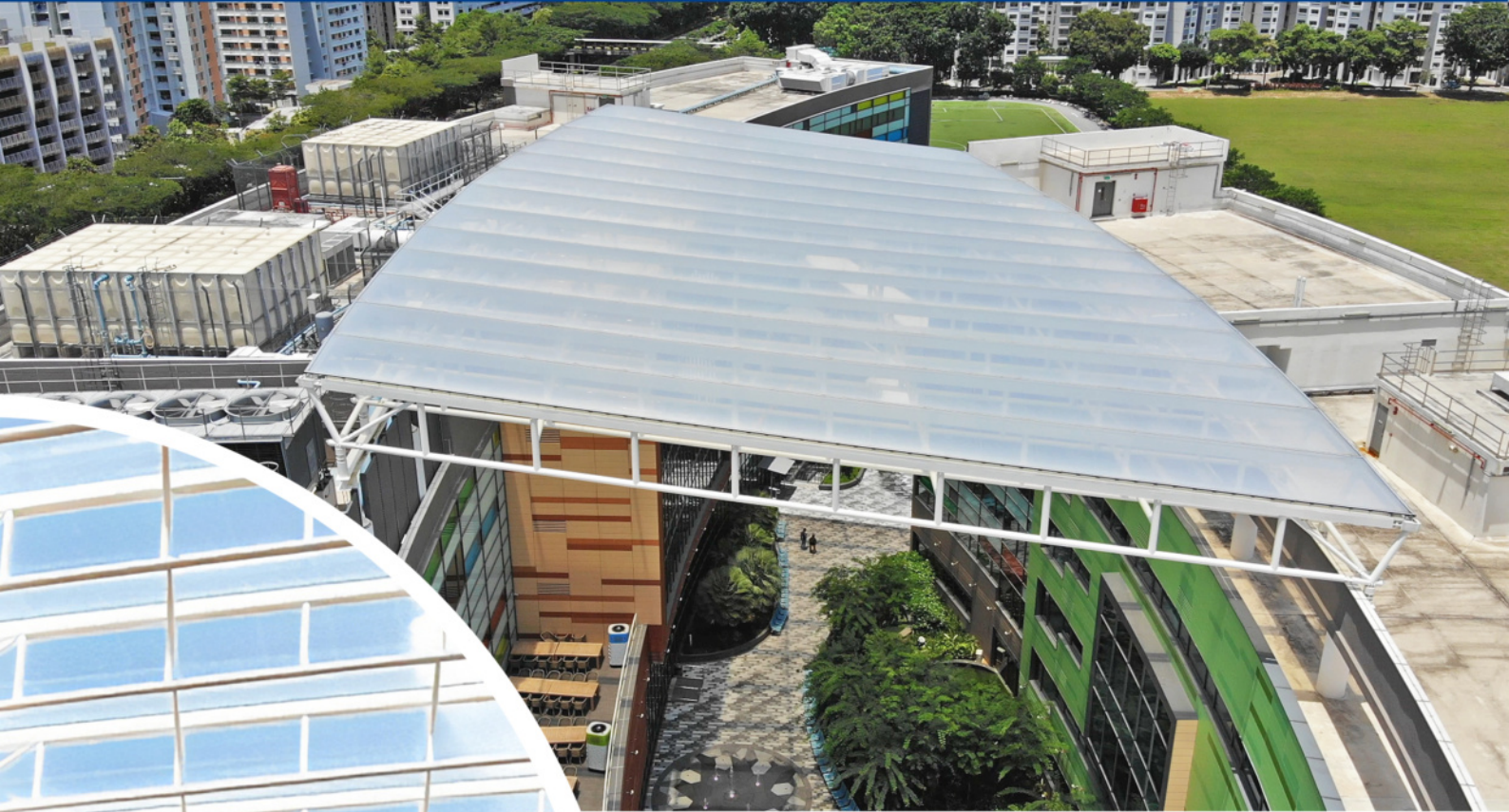
- ETFE can achieve an efficacy equivalent to glass. Better insulation performance can be achieved when ETFE is used in multiple layers.

Typical Solar Shading Coefficients



With double or more layers, ETFE cushions provide better shading coefficient to reduce solar heat gained, which results in significantly higher energy savings.





## GIIS Nest Canopy

CLIENT  
Global Indian International School

ARCHITECT  
Architects Team 3 Pte Ltd

AREA  
3,500 m<sup>2</sup>

MATERIAL INSTALLED  
ETFE Double Layer (Cushion)

LOCATION  
Singapore

CONSTRUCTION YEAR  
2018



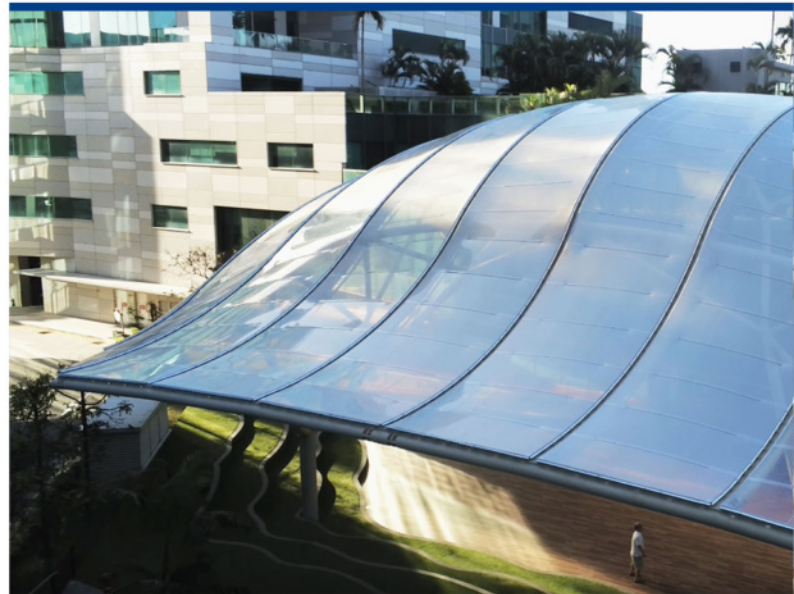


## ADAS® ETFE SYSTEM



ADAS® ETFE Skylight is a high quality integrated system using ETFE (Ethylene Tetrafluoroethylene) film which is a highly transparent, strong and durable lightweight material that has a similar function to architectural glazing - a perfect alternative to replace heavy glass roofs and facades.

A fascinating a colour-changing facade can be made possible by integrating a lighting system that visually enhances the building exterior during nighttime. ETFE has been used to build many iconic structures and famous landmarks all over the world. The system keeps evolving to provide endless possibilities and constantly goes beyond known limits.



### Singapore Office Multimedia Engineering Pte Ltd

50 Bukit Batok Street 23 #05-15,  
Midview Building Singapore 659578.

Tel  
(65) 6765 6288

Email  
mepl@me.com.sg

Website  
www.me.com.sg

### Malaysia Office

Contact Person : Mr Ryan Wong  
Tel (60) 11-1081 6630  
Email [adas\\_hightex@live.com](mailto:adas_hightex@live.com)

### USA Office

Contact Person : Mr Bernd Rennebeck  
Tel (386) 668 0474  
Email [bernd@spstin.com](mailto:bernd@spstin.com)