

ADAS<sup>®</sup>

# Spaceframe





# ADAS

MULTIMEDIA ENGINEERING PTE LTD

## Since 1988

- Design and build Archi-Engineering firm.
- 35 years experience with more than 650 projects.
- Lightweight long span structure specialist.
- Low risk with tested & proven design details.
- High level of Prefabrication:
  - Fast Erection on Site
  - Precise Fabrication
  - Good Quality Control
- Wide variety of durable, low maintenance cladding materials.

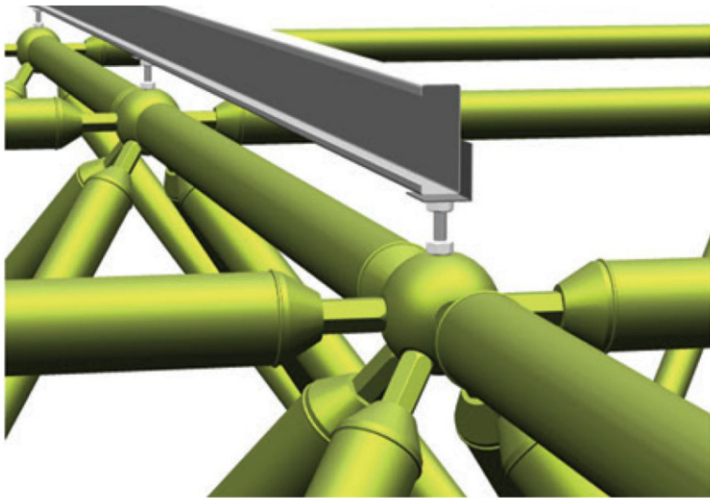


## APPLICATIONS

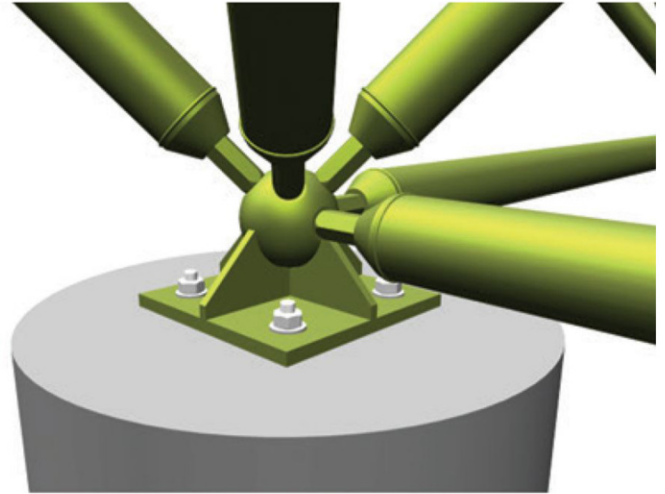
---

ADAS® Spaceframe can be tailored to meet the needs of every project. With the capability to construct structures of various geometry, a building can be transformed to maximise its potential through the incredible structural efficiency of our large span spaceframe technology.

ADAS® Spaceframe purlin detail



ADAS® Spaceframe support detail



ADAS® Spaceframe is extremely suitable for commercial and industrial purposes, swimming pools, sports stadiums, assembly areas, mosques, exhibition halls, showrooms, and more.

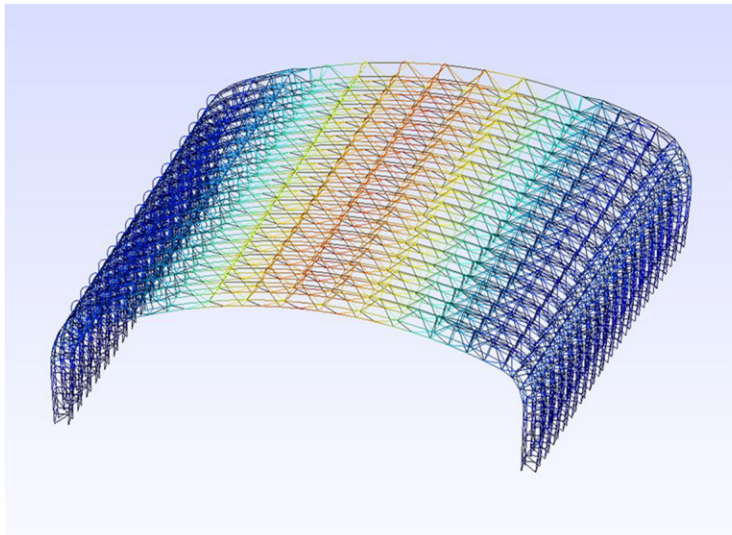




## ONE-STOP SPACEFRAME SOLUTION

---

In-house design and engineering



Spaceframe nodes fabrication



Steel member fabrication



Installation







## Changi Airport Cargo Megaplex

### CLIENT

Civil Aviation Authority Singapore

### SCOPE OF WORK

Design and build of spaceframe roof

### AREA

18,000 m<sup>2</sup>

### MATERIAL INSTALLED

Mild steel spaceframe

### LOCATION

Singapore

### CONSTRUCTION YEAR

2000



## Blue Green Diamonds, USA

### SCOPE OF WORK

Design and engineering of rooftop pyramids

### AREA

800 m<sup>2</sup>

### MATERIAL INSTALLED

Mild steel spaceframe

### CONSTRUCTION YEAR

2000



## Bangunan Gunasama, Malaysia

### SCOPE OF WORK

Design and build of spaceframe domes

### AREA

36,000 m<sup>2</sup>

### MATERIAL INSTALLED

Mild steel spaceframe

### CONSTRUCTION YEAR

2007



## Grand Ocean Residence, Taiwan

### SCOPE OF WORK

Design and supply of rooftop pavilion

### AREA

1,500 m<sup>2</sup>

### MATERIAL INSTALLED

Mild steel spaceframe

### CONSTRUCTION YEAR

2010





## Bukit Jalil Stadium Pavilion

### CLIENT

National Sports Council of Malaysia

### MATERIAL INSTALLED

Mild steel spaceframe

### SCOPE OF WORK

Design and build of spaceframe roof

### LOCATION

Malaysia

### AREA

11,700 m<sup>2</sup>

### CONSTRUCTION YEAR

2007





## ADAS® SPACEFRAME



ADAS® Spaceframe is a patented structural system that provides an aesthetically pleasing, cost-effective, and lightweight solution to large span structures. Our own proprietary engineering design software, combined with our modern manufacturing facility enables us to undertake spaceframe structures of any form and magnitude.

With over 30 years of design and build experience, our team is able to offer a full range of services from concept design, detail design, load analysis, and contract document preparation to project management, contract supervision and control, thereby ensuring that our clients receive the best possible service.



### Singapore Office Multimedia Engineering Pte Ltd

50 Bukit Batok Street 23 #05-15,  
Midview Building Singapore 659578.

Tel  
(65) 6765 6288

Email  
mepl@me.com.sg

Website  
www.me.com.sg

### Malaysia Office

Contact Person : Mr Ryan Wong  
Tel (60) 11-1081 6630  
Email [adas\\_hightex@live.com](mailto:adas_hightex@live.com)

### USA Office

Contact Person : Mr Bernd Rennebeck  
Tel (386) 668 0474  
Email [bernd@spstin.com](mailto:bernd@spstin.com)